

SMART IP SOLUTION

IP Camera · Speed Dome · NVR · CMS

Tiandy

Tiandy Technologies Co.,Ltd.

No.8, Huake Rd2, Binhai Hi-Tech Industry Park(Huayuan)
Tianjin 300384 China

TEL: +86-22-58596065
FAX: +86-22-58596177
Email: sales@tiandy.com

Distributor Information

ABOUT TIANDY

TIANDY is one of Top11 leading video surveillance manufacturers in the world. We offer full range of IP products, with our strong R&D team of 800+ engineers, we keep to offer up-to-date technology to support our partners in different applications.

By following ISO9001 standard and strict internal QC system, now we are able to control the defect rate of our product to be lower than 1%. Moreover, TIANDY is one of ONVIF Full Members in the world, which ensure our products to work perfectly with most of the popular brands of IP products in the market. With 30%+ annual increasing rate, we are confident to become a key player and make contribution to the safety of the world.



SUCCESSFUL CASE



BMW Workshop



China National Stadium



UK-London



China-Shanghai



Turkey-Istanbul



Ecuador-Quito



Tajikistan-Dushanbe



Brazil-Natal

TIANDY HIGHLIGHTS

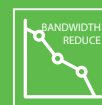
TVP[®] Super Starlight Technology



AEW Unique Auto-tracking Early-warning



S+265 Technology



CMS 200-100,000ch



Plugin Free No ActiveX / All browsers support



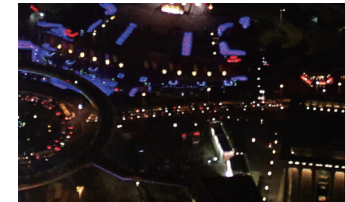
Panoramic
Auto-tracking Early-warning Fisheye
Panoramic tracking laser



Super Starlight

TVP Starlight Technology

- Ultra Low Light 0.0004Lux
- Enhance SNR by 7dB
- Color Accuracy 30% ↑
- Lowlight Color Image Quality 38% ↑
- Sharpness Self-adaption



Real Scene



Super Starlight





Tiandy Panoramic Laser PTZ

- 180° / 360° Panoramic view + Tracking
- Auto-tracking Early Warning
- Laser: 500m+ night vision
- 44x ultra zooming
- Gyroscope, Wifi



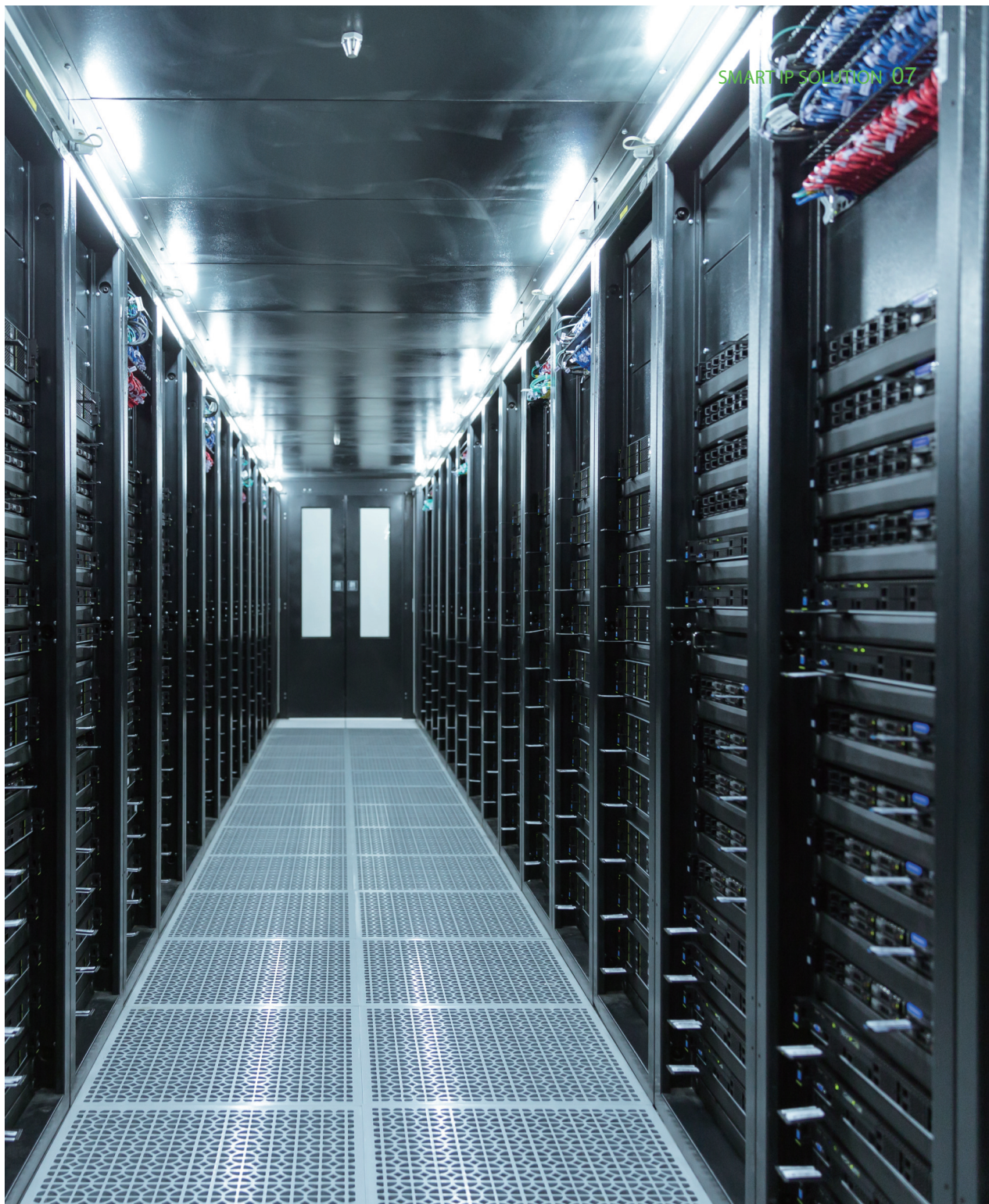
LONG DISTANCE 500M

AUTO-TRACKING EARLY-WARNING

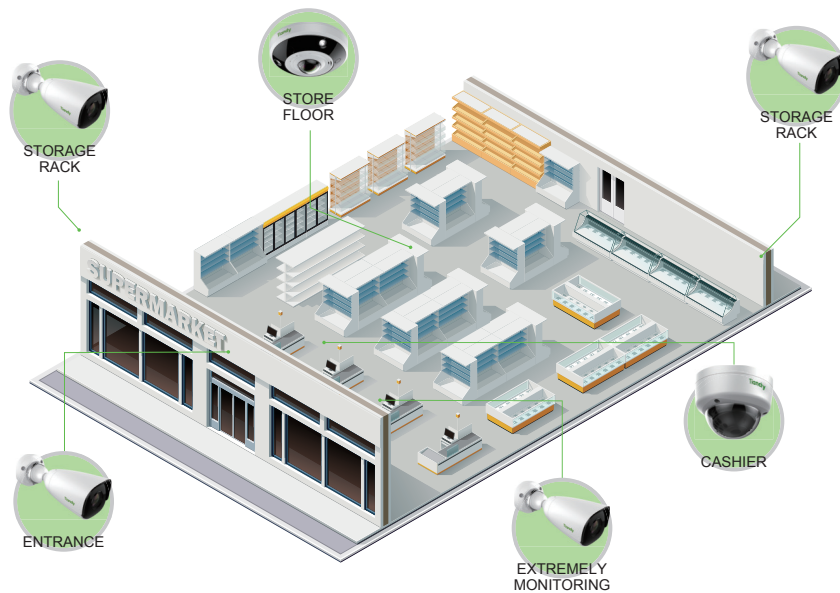
TC-NR2320M7-E24

4K H.265 320/160CH 24HDD HOT SWAP NVR

- 320ch/160ch management
- Redundant power
- TV Wall
- 24HDD+Extended Storage
- Raid 0,1,5,6

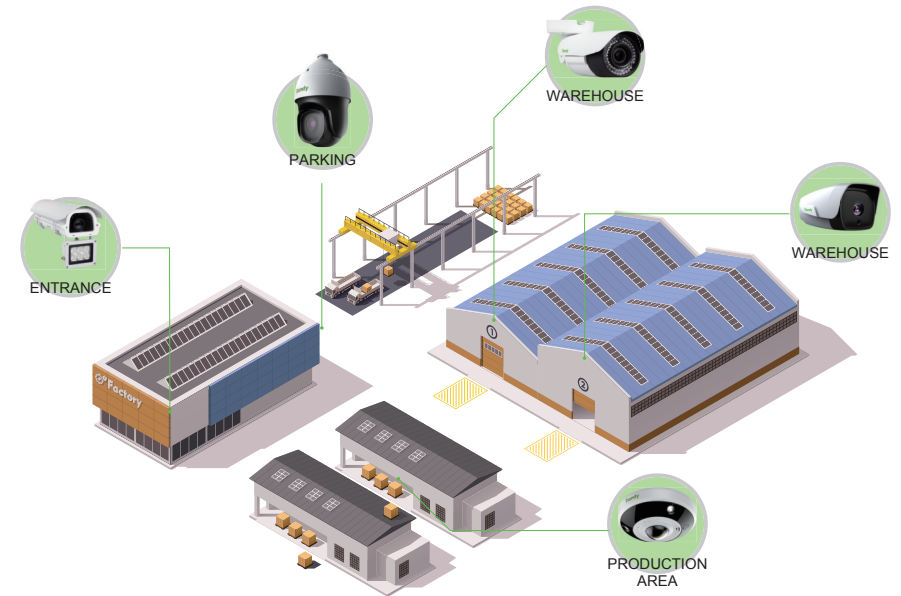


SOLUTIONS



Retail

- Fisheye: 12MP/Panoramic/Heat map
- Mini Bullet: People counting
- Mini Dome: Face detection
- Super Starlight Camera for night view
- 4K H.265 Management NVR



Industrial

- Exclusive AEW solution, reached pre-warming.
- Leading super-starlight technology, high quality night vision.
- Full series VCA function, more than 10 types.
- Newly fish eye panoramic camera, equipped with Auto-tracking.





LITE SERIES

Model								
	TC-NCL514S	TC-NCL522S	TC-NCL214S	TC-NCL222S	TC-NCL214	TC-NCL222	TC-NCL23MN	TC-NCL24MN
Image Sensor	1/2.8" CMOS	1/2.8" CMOS	1/2.8" CMOS	1/2.8" CMOS	1/2.7" CMOS	1/2.7" CMOS	1/2.7" CMOS	1/2.7" CMOS
Min. Illumination	Color: 0.002Lux @(F1.2, AGC ON) B/W: 0.001Lux @(F1.2, AGC ON)	Color: 0.002Lux @(F1.2, AGC ON) B/W: 0.001Lux @(F1.2, AGC ON)	Color: 0.002 Lux @(F1.2, AGC ON) B/W: 0.001 Lux @(F1.2, AGC ON)	Color: 0.002 Lux @(F1.2, AGC ON) B/W: 0.001 Lux @(F1.2, AGC ON)	Color: 0.002 Lux @(F1.2, AGC ON) B/W: 0.001Lux @(F1.2, AGC ON)	Color: 0.002 Lux @(F1.2, AGC ON) B/W: 0.001Lux @(F1.2, AGC ON)	Color: 0.5 Lux @(F1.2, AGC ON) B/W: 0.25Lux @(F1.2, AGC ON)	Color: 0.5 Lux @(F1.2, AGC ON) B/W: 0.25Lux @(F1.2, AGC ON)
Lens	4mm	2.8mm	4mm	2.8mm	4mm	2.8mm	2.8 - 9mm	2.8 - 9mm
WDR	120dB	120dB	140dB	140dB	100dB	100dB	100dB	100dB
Video Compression	S+265/H.264/MJPEG	S+265/H.264/MJPEG	S+ 265/H.264/M-JPEG	S+ 265/H.264/M-JPEG	S+265/H.264/MJPEG	S+265/H.264/MJPEG	H.264/M-JPEG	H.264/M-JPEG
Max. Image Resolution	5MP	5MP	1920x1080	1920x1080	1920x1080	1920x1080	1920x1080	1920x1080
Frame Rate	5MP(2560*1920)@20fps	5MP(2560*1920)@20fps	1920x1080@30fps	1920x1080@30fps	1920x1080@30fps	1920x1080@30fps	1920x1080@20fps	1920x1080@20fps
HLC	Y	Y	Y	Y	Y	Y	Y	Y
Smart Defog	Y	Y	Y	Y	Y	Y	Y	Y
IR Range	20m-30m	20m-30m	20m-30m	20m-30m	20m-30m	20m-30m	30m-50m	20m-30m
POE	Y	Y	Y	Y	Y	Y	Y	Y
Audio I/O	N/A	N/A	N/A	N/A	N/A	N/A	N/A	N/A
Alarm I/O	N/A	N/A	N/A	N/A	N/A	N/A	N/A	N/A
Working Temperature	-35°C ~ 60°C(IR OFF) -35°C ~ 40°C(IR ON) 0 ~ 95% RHG	-35°C ~ 60°C(IR OFF) -35°C ~ 40°C(IR ON) 0 ~ 95% RHG	-35°C ~ 60°C(IR OFF) -35°C ~ 40°C(IR ON) 0 ~ 95% RHG	-35°C ~ 60°C(IR OFF) -35°C ~ 40°C(IR ON) 0 ~ 95% RHG	-35°C ~ 60°C(IR OFF) -35°C ~ 40°C(IR ON) 0 ~ 95% RHG	-35°C ~ 60°C(IR OFF) -35°C ~ 40°C(IR ON) 0 ~ 95% RHG	-35°C ~ 60°C(IR OFF) -30°C ~ 40°C(IR ON) 0 ~ 95% RHG	-35°C ~ 60°C(IR OFF) -30°C ~ 40°C(IR ON) 0 ~ 95% RHG
Power Supply	DC 12V±10%,PoE (802.3af)	DC 12V±10%,PoE (802.3af)	DC 12V ± 10%, PoE (802.3af)	DC 12V ± 10%, PoE (802.3af)	DC 12V ± 10%, PoE (802.3af)	DC 12V ± 10%, PoE (802.3af)	DC12V±25%, PoE (802.3af)	DC12V±25%,PoE (802.3af)
IP Protection	IP67	IP66	IP67	IP66	IP67	IP66	IP67	IP66
Memory Slot	N/A	N/A	N/A	N/A	N/A	N/A	N/A	N/A
VCA	Tripwire/Perimeter	Tripwire/Perimeter	Tripwire/Perimeter	Tripwire/Perimeter	Tripwire/Perimeter	Tripwire/Perimeter	N/A	N/A
System Compatibility	ONVIF (Profile S),SDK,CGI	ONVIF (Profile S),SDK,CGI	ONVIF (Profile S), SDK,CGI	ONVIF (Profile S), SDK,CGI	ONVIF (Profile S),SDK,CGI	ONVIF (Profile S),SDK,CGI	ONVIF (Profile S), SDK,CGI	ONVIF (Profile S), SDK,CGI

PRO SERIES

Model	 TC-NC514S	 TC-NC552S	 TC-NC414	 TC-NC452	 TC-NC43M	 TC-NC44M	 TC-NC214S	 TC-NC252S
Image Sensor	1/3" CMOS	1/3" CMOS	1/3" CMOS	1/3" CMOS	1/3" CMOS	1/3" CMOS	1/2.8" CMOS	1/2.8" CMOS
Min. Illumination	Color: 0.002Lux(F1.2,AGC ON) B/W: 0.001Lux(F1.2,AGC ON)	Color: 0.002Lux(F1.2,AGC ON) B/W: 0.001Lux(F1.2,AGC ON)	Color: 0.05Lux(F1.2,AGC ON) B/W: 0.01Lux(F1.2,AGC ON)	Color: 0.05Lux(F1.2,AGC ON) B/W: 0.01Lux(F1.2,AGC ON)	Color: 0.05Lux(F1.2,AGC ON) B/W: 0.01Lux(F1.2,AGC ON)	Color: 0.05Lux(F1.2,AGC ON) B/W: 0.01Lux(F1.2,AGC ON)	Color: 0.002 Lux @(F1.2, AGC ON) B/W: 0.001Lux @(F1.2, AGC ON)	Color: 0.002Lux(F1.2,AGC ON) B/W: 0.001Lux(F1.2,AGC ON)
Lens	4mm	2.8mm	4mm	2.8mm	Motorized 2.8-12mm	Motorized 2.8-12mm	4mm	2.8mm
Day& Night	Dual IR Cut Filter with Auto Switch	Dual IR Cut Filter with Auto Switc	IR Cut Filter with Auto Switch	IR Cut Filter with Auto Switch	IR Cut Filter with Auto Switch	IR Cut Filter with Auto Switch	IR Cut Filter with Auto Switch	IR Cut Filter with Auto Switch
WDR	120 dB	120dB	120dB	120 dB	120 dB	120 dB	140dB	140 dB
Focus	Fixed	Fixed	Fixed	Fixed	Auto	Auto	Auto	Auto
Video Compression	S+265/H.265/H.264/MJPEG	S+265/H.265/H.264/MJPEG	S+265/H.265/H.264/MJPEG	S+265/H.265/H.264/MJPEG	S+265/H.264/MJPEG	S+265/H.264/MJPEG	S+265/H.265/H.264H/H.264M/H.264B/MJPEG	S+265/H.265/H.264/M-JPEG
Max. Image Resolution	2560x1920	2560x1920	2560x1440	2560x1440	2560x1440	2560x1440	1920x1080	1920x1080
Frame Rate	5MP(2560*1920)@20fps	5MP(2560*1920)@20fps	2560x1440@30fps	2560x1440@30fps	2560x1440@30fps	2560x1440@30fps	1920x1080@30fps	1920x1080@30fps
HLC	Y	Y	Y	Y	Y	Y	Y	Y
Smart Defog	Y	Y	Y	Y	Y	Y	Y	Y
Corridor	Y	Y	Y	Y	Y	Y	Y	Y
VCA	Tripwire/Double Tripwire/Perimeter/Object Abandon/Object Lost/Running/Loitering/Parking/Crowd/ Audio Abnormal Detection/Video Abnormal Detection	Tripwire/Double Tripwire/Perimeter/Object Abandon/Object Lost/Running/Loitering/Parking/Crowd/ Audio Abnormal Detection/Video Abnormal Detection	Tripwire/Double Tripwire/Perimeter/Object Abandon/Object Lost/Running/Loitering/Parking/Crowd/ Audio Abnormal Detection/Video Abnormal Detection	Tripwire/Double Tripwire/Perimeter/Object Abandon/Object Lost/Running/Loitering/Parking/Crowd/ Audio Abnormal Detection/Video Abnormal Detection	Tripwire/Double Tripwire/Perimeter/Object Abandon/Object Lost/Running/Loitering/Parking/Crowd/ Audio Abnormal Detection/Video Abnormal Detection	Tripwire/Double Tripwire/Perimeter/Object Abandon/Object Lost/Running/Loitering/Parking/Crowd/ Audio Abnormal Detection/Video Abnormal Detection	Tripwire/Double Tripwire/Perimeter/Object Abandon/Object Lost/Running/Loitering/Parking/Crowd/ Audio Abnormal Detection/Video Abnormal Detection	Tripwire/Double Tripwire/Perimeter/Object Abandon/Object Lost/Running/Loitering/Parking/Crowd/ Audio Abnormal Detection/Video Abnormal Detection
System Compatibility	ONVIF (Profile S), SDK, CGI	ONVIF (Profile S), SDK, CGI	ONVIF (Profile S), SDK, CGI	ONVIF (Profile S), SDK, CGI	ONVIF (Profile S), SDK, CGI	ONVIF (Profile S), SDK, CGI	ONVIF (Profile S), SDK, CGI	ONVIF (Profile S), SDK, CGI
Audio I/O	N/A	1/0 , Mic in	N/A	1/0 , Mic in	1/1	1/1, built-in Mic	1/1	1/1, built-in Mic
Alarm I/O	N/A	N/A	N/A	N/A	2/1	2/1	1/0	2/2
MicroSD Card	MicroSD Card Slot, up to 128GB	MicroSD Card Slot, up to 128GB	Micro SD card slot up to 128G	Micro SD card slot up to 128G	Micro SD card slot up to 128G	MicroSD Card Slot ,Up to 128GB	Micro SD card slot up to 128G	Micro SD card slot up to 128G
USB	N/A	N/A	N/A	N/A	1-ch	N/A	N/A	N/A
Power Supply	DC12V±25%,PoE (802.3af)	DC12V±25%,PoE (802.3af)	DC12V±25%,PoE (802.3af)	DC12V±25%,PoE (802.3af)	DC12V±25% , PoE	DC 12V±10% , PoE	DC12V±25%,PoE (802.3af)	DC12V±25%,PoE (802.3af)
Circuit Protection	TVS 6000V, Lightning Surge Protection: (Power 2000V, RJ45 1000V)	TVS 6000V, Lightning Surge Protection: (Power 2000V, RJ45 1000V)	TVS 6000V, Lightning Surge Protection: (Power 2000V, RJ45 1000V)	TVS 6000V, Lightning Surge Protection: (Power 2000V, RJ45 1000V)	TVS 6000V, Lightning Surge Protection: (Power 2000V, RJ45 1000V)	TVS 6000V, Lightning Surge Protection: (Power 2000V, RJ45 1000V)	TVS 6000V, Lightning Surge Protection: (Power 2000V, RJ45 1000V)	TVS 6000V, Lightning Surge Protection: (Power 2000V, RJ45 1000V)
IP Protection	IP67	IP66, IK10	IP67	IP66,IK10	IP67	IP66, IK10	IP67	IP66, IK10
IR Range	15-25m	10-20m	15-25m	10-20m	30-50m	20-30m	15m~25m	10m~20m
IR LEDs	2pcs Array	8pcs Array	2pcs Array	8pcs Array	54pcs φ5 IR LEDs	32pcs φ5 IR LEDs	2pcs Array	8pcs Array
Working Temperature	-35℃~ 60℃(IR OFF) -35℃~ 40℃(IR ON) 0~ 95% RHG	-35℃~ 60℃(IR OFF) -35℃~ 40℃(IR ON), 0~ 95% RHG	-35℃~ 60℃(IR OFF) -35℃~ 40℃(IR ON) 0~ 95% RHG	-35℃~ 60℃(IR OFF) -35℃~ 40℃(IR ON) 0~ 95% RHG	-35℃~ 60℃(IR OFF) -35℃~ 40℃(IR ON) 0~ 95% RHG	-35℃~ 60℃(IR OFF) -35℃~ 40℃(IR ON) 0~ 95% RHG	-35℃~ 60℃(IR OFF) -20℃~ 40℃(IR ON) 0~ 95% RHG	-35℃~ 60℃(IR OFF) -20℃~ 40℃(IR ON) 0~ 95% RHG

PRO SERIES

Model	 TC-NC23MS	 TC-NC24MS	 TC-NC23M	 TC-NC24M
Image Sensor	1/2.8" CMOS	1/2.8" CMOS	1/2.7" CMOS	1/2.7" CMOS
Min. Illumination	Color: 0.002Lux@(F1.2, AGC ON) B/W: 0.001Lux@(F1.2, AGC ON)	Color: 0.002Lux @(F1.6, ICR OFF) B/W: 0.001Lux @(F1.6, ICR ON)	Color: 0.05Lux(F1.2, AGC ON) B/W: 0.01Lux(F1.2, AGC ON)	Color: 0.05Lux(F1.2, AGC ON) B/W: 0.01Lux(F1.2, AGC ON)
Lens	Motorized 2.8-12mm	Motorized 2.8-12mm	Motorized 2.8-12mm	Motorized 2.8-12mm
Day& Night	IR Cut Filter with Auto Switch	IR Cut Filter with Auto Switch	IR Cut Filter with Auto Switch	IR Cut Filter with Auto Switch
WDR	140 dB	140 dB	100 dB	100 dB
Focus	Auto	Auto	Auto	Auto
Video Compression	S+265/H.265/H.264/MJPEG	S+265/H.265/H.264/MJPEG	S+265/H.264/MJPEG	S+265/H.264/MJPEG
Max. Image Resolution	1920x1080	1920x1080	1920x1080	1920x1080
Frame Rate	1920x1080@30fps	1920x1080@30fps	1920x1080@30fps	1920x1080@30fps
HLC	Y	Y	Y	Y
Smart Defog	Y	Y	Y	Y
Corridor	Y	Y	Y	Y
VCA	Tripwire/Double Tripwire/Perimeter/Object Abandon/Object Lost/Running/Loitering/Parking/Crowd/Audio Abnormal Detection/Video Abnormal Detection	Tripwire/Double Tripwire/Perimeter/Object Abandon/Object Lost/Running/Loitering/Parking/Crowd/Audio Abnormal Detection/Video Abnormal Detection	Tripwire/Double Tripwire/Perimeter/Object Abandon/Object Lost/Running/Loitering/Parking/Crowd/Audio Abnormal Detection/Video Abnormal Detection	Tripwire/Double Tripwire/Perimeter/Object Abandon/Object Lost/Running/Loitering/Parking/Crowd/Audio Abnormal Detection/Video Abnormal Detection
System Compatibility	ONVIF (Profile S), SDK, CGI	ONVIF (Profile S), SDK, CGI	ONVIF (Profile S), SDK, CGI	ONVIF (Profile S), SDK, CGI
Audio I/O	1/1	1/1, built-in Mic	1/1	1/1, built-in Mic
Alarm I/O	2/1	2/1	1/0	2/2
MicroSD Card	MicroSD Card Slot, Up to 128GB	Micro SD card slot up to 128G	Micro SD card slot up to 128G	MicroSD Card Slot, Up to 128GB
USB	1-ch	N/A	1-ch	N/A
Power Supply	DC12V±25%, PoE (802.3af)	DC12V±25%, PoE (802.3af)	DC12V±25%, PoE	DC 12V±25%, PoE
Circuit Protection	TVS 6000V, Lightning Surge Protection: (Power 2000V, RJ45 1000V)	TVS 6000V, Lightning Surge Protection: (Power 2000V, RJ45 1000V)	TVS 6000V, Lightning Surge Protection: (Power 2000V, RJ45 1000V)	TVS 6000V, Lightning Surge Protection: (Power 2000V, RJ45 1000V)
IP Protection	IP67	IP66, IK10	IP67	IP66, IK10
IR Range	30m~50m	20m~30m	30-50m	20-30m
IR LEDs	54pcs φ5 Array IR LEDs	32pcs φ5 Array IR LEDs	54pcs φ5 IR LEDs	32pcs φ5 IR LEDs
Working Temperature	-35℃ ~ 60℃(IR OFF) -35℃ ~ 40℃(IR ON) 0 ~ 95% RHG	-35℃ ~ 60℃(IR OFF) -35℃ ~ 40℃(IR ON) 0 ~ 95% RHG	-30℃ ~ 60℃(IR OFF) -30℃ ~ 40℃(IR ON) 0 ~ 95% RHG	-30℃ ~ 60℃(IR OFF) -30℃ ~ 40℃(IR ON) 0 ~ 95% RHG






ULTRA SERIES

Model	 TC-NC1261	 TC-NC2AS	 TC-NC27VX	 TC-NC23MX
Image Sensor	1/1.8" 12MP CMOS	1/2.8" CMOS	1/1.9" CMOS	1/1.9" CMOS
Min. Illumination	Color: 0.01 Lux @(F1.2, AGC ON) B/W: 0.005Lux @(F1.2, AGC ON)	Color: 0.002Lux @(F1.6, ICR OFF) B/W: 0.001 Lux @(F1.6, ICR ON)	Color: 0.0008 Lux @(F1.2, AGC ON) B/W: 0.0001Lux @(F1.2, AGC ON)	Color: 0.0008 Lux @(F1.2, AGC ON) B/W: 0.0001Lux @(F1.2, AGC ON)
Lens	2mm, F2.8, horizontal field of view: 180°(wall mount) 360°(ceiling mount), 360°(table mount)	5.2mm ~ 98mm	N/A	3.6-10mm
Day& Night	IR Cut Filter with Auto Switch	Dual ICR	IR Cut Filter with Auto Switch	IR Cut Filter with Auto Switch
WDR	100 dB	140 dB	140 dB	140 dB
Focus	Auto	Auto	N/A	Auto
Video Compression	S+265/H.265/H.264/MJPEG	S+265/H.265/H.264/MJPEG	S+265/H.265/H.264/MJPEG	S+265/H.265/H.264/MJPEG
Max. Image Resolution	4000 × 3072	1920x1080	1920x1080	1920x1080
Frame Rate	4000 × 3072@20fps	1920x1080@30fps	1920x1080@60fps	1920x1080@60fps
HLC	Y	Y	Y	Y
Smart Defog	Y	N/A	Y	Y
Corridor	N/A	Y	Y	Y
VCA	Tripwire/Double Tripwire/Early Warning Heat Map/Autotracking Abnormal Detection Video Abnormal Detection	Tripwire/Double Tripwire/Perimeter Object Abandon/Object Lost/Running/Loitering/Parking/Crowd Audio Abnormal Detection Video Abnormal Detection	Tripwire/Double Tripwire/Perimeter Object Abandon/Object Lost/Running/Loitering Parking/Crowd/Face Detection/People Counting Audio Abnormal Detection Video Abnormal Detection/On duty Detection	Tripwire/Double Tripwire/Perimeter Object Abandon/Object Lost/Running/Loitering Parking/Crowd/Face Detection/People Counting Audio Abnormal Detection Video Abnormal Detection/On duty Detection
System Compatibility	ONVIF (Profile S), SDK, CGI	ONVIF (Profile S), SDK, CGI	ONVIF (Profile S), SDK, CGI	ONVIF (Profile S), SDK, CGI
Audio I/O	1/1	1/1	1/1	1/1
Alarm I/O	2/1	3/2	2/1	2/1
MicroSD Card	MicroSD Card Slot, up to 128GB	MicroSD Card Slot, up to 128GB	MicroSD Card Slot, up to 128GB	MicroSD Card Slot, up to 128GB
USB	1-ch	1-ch	1-ch	1-ch
Power Supply	DC 12V±10%, PoE	AC24V±15%	DC 12V±10%/AC24V±10%/PoE	DC12 V ± 10%, PoE (802.3af)
Circuit Protection	TVS 6000V, Lightning Surge 4000V Protection	TVS 6000V, Lightning Surge 4000V Protection	TVS 6000V, Lightning/Surge 2000V	TVS 6000V, Lightning Surge Protection: (Power 2000V, RJ45 1000V)
IP Protection	IP67	IP66	IP65	IP67
IR Range	15m	80-100m	N/A	20m~50m
IR LEDs	2pcs Array IR LEDs	4pcs Array IR LEDs	N/A	54pcs φ5 Array IR LEDs
Working Temperature	-35℃ ~ 60℃, 0 ~ 95% RHG	-40℃ ~ 70℃, 0 ~ 95% RHG	-35℃ ~ 65℃, 0 ~ 95% RHG	-35℃ ~ 60℃(IR OFF) -35℃ ~ 40℃(IR ON) 0 ~ 95% RHG

PTZ

[illegible]

NETWORK VIDEO RECORDERS

Model							
	TC-NR5005M7-P1	TC-NR5010M7-P2	TC-NR5020M7-P2	TC-NR5005M7-S1	TC-NR5010M7-S1	TC-NR5020M7-S1	TC-NR5010M7-S2
Video Input	5-ch	10-ch	20-ch	5-ch	10-ch	20-ch	10-ch
Audio I/O	1/1	1/0	N/A	N/A	N/A	N/A	1/1
Video Compression	S+265/H.264	S+265/H.264	S+265/H.264	S+265/H.264	S+265/H.264	S+265/H.264	S+265/H.264
Max. Input/Record	40Mbps/40Mbps	80Mbps/80Mbps	80Mbps/80Mbps	40Mbps/40Mbps	40Mbps/40Mbps	60Mbps/60Mbps	400Mbps/200Mbps
Network Interface	1X RJ-45 10/100Mbps	1X RJ-45 10/100Mbps	1X RJ-45 10/100Mbps	1X RJ-45 10/100Mbps	1X RJ-45 10/100/1000Mbps	1X RJ-45 10/100/1000Mbps	1X RJ-45 10/100/1000Mbps
Recording Resolution	Up to 5MP	Up to 5MP	Up to 4K	Up to 5MP	Up to 5MP	Up to 4K	Up to 4K
Synchronous Playback	1-ch 5MP/4-ch 1080P/720P	1-ch 5MP/4-ch 1080P/720P	1-ch 4K/4-ch 1080P/720P	1-ch 5MP/4-ch 1080P/720P	1-ch 5MP/16-ch 1080P/720P/4CIF	1-ch 4K/16-ch 1080P/720P/4CIF	1-ch 4K/16-ch 1080P/720P/4CIF
SATA(Max)	8TB	8TB	8TB	8TB	8TB	8TB	8TB
eSATA	N/A	N/A	N/A	N/A	N/A	N/A	N/A
HDD(Max)	1HDD	1HDD	1HDD	1HDD	1HDD	1HDD	2HDD
RAID	N/A	N/A	N/A	N/A	N/A	N/A	N/A
POE	4 Ports	8 Ports	16 Ports	N/A	N/A	N/A	N/A
Alarm I/O	0/1	0/1	0/1	0/1	0/1	0/1	0/1
Corridor Mode	Y, 16:9 to 9:16, Only for Tiandy Cameras	Y, 16:9 to 9:16, Only for Tiandy Cameras	Y, 16:9 to 9:16, Only for Tiandy Cameras	Y, 16:9 to 9:16, Only for Tiandy Cameras	Y, 16:9 to 9:16, Only for Tiandy Cameras	Y, 16:9 to 9:16, Only for Tiandy Cameras	Y, 16:9 to 9:16, Only for Tiandy Cameras
VCA	Support Tiandy Camera VCA	Support Tiandy Camera VCA	Support Tiandy Camera VCA	Support Tiandy Camera VCA	Support Tiandy Camera VCA	Support Tiandy Camera VCA	Support Tiandy Camera VCA
Power Supply	DC48V, ≤20W (without HDD)	100-240V AC, ≤25W (without HDD)	100-240V AC, ≤25W (without HDD)	DC12V/2A, ≤10W (without HDD)	DC12V/2A, ≤10W (without HDD)	DC12V/2A, ≤10W (without HDD)	DC12V/2A, ≤10W (without HDD)
Working Temperature	-10 °C ~ +55 °C (+14 °F ~ + 131 °F), 10 % ~ 90 %RHG	-10 °C ~ +55 °C (+14 °F ~ + 131 °F), 10 % ~ 90 %RHG	-10 °C ~ +55 °C (+14 °F ~ + 131 °F), 10 % ~ 90 %RHG	-10 °C ~ +55 °C (+14 °F ~ + 131 °F), 10 % ~ 90 %RHG	-10 °C ~ +55 °C (+14 °F ~ + 131 °F), 10 % ~ 90 %RHG	-10 °C ~ +55 °C (+14 °F ~ + 131 °F)	-10 °C ~ +55 °C (+14 °F ~ + 131 °F), 10 % ~ 90 %RHG
Chassis	1U	1U	1U	1U	1U	1U	1U

NETWORK VIDEO RECORDERS

Model								
TC-NR5020M7-S2		TC-NR5020M7-S4	TC-NR5040M7-S4	TC-NR5040M7-S8	TC-NR5080M7-S8	TC-NR5080M7-E16	TC-NR5160M7-E24-C	TC-NR5320M7-E24
Video Input	20-ch	20-ch	40-ch	40-ch	80-ch	80-ch	160-ch	320-ch
Audio I/O	1/1	1/1	1/1	1/1	1/2	1/2	1/1	1/1
Video Compression	S+265/H.264	S+265/H.264	S+265/H.264	S+265/H.264	S+265/H.265/H.264	S+265/H.265/H.264	S+265/H.265/H.264	S+265/H.265/H.264
Max. Input/Record	80Mbps/80Mbps	200Mbps/200Mbps	300Mbps/200Mbps	400Mbps/200Mbps	400Mbps/200Mbps	400Mbps/200Mbps	400Mbps/200Mbps	800Mbps/600Mbps
Network Interface	1X RJ-45 10/100/1000Mbps	1X RJ-45 10/100/1000Mbps	2X RJ-45 10/100/1000Mbps	2X RJ-45 10/100/1000Mbps	2X RJ-45 10/100/1000Mbps	2X RJ-45 10/100/1000Mbps	2X RJ-45 10/100/1000Mbps	2X RJ-45 10/100/1000Mbps
Recording Resolution	Up to 4K	Up to 4K	Up to 4K	Up to 4K	Up to 4K	Up to 4K	Up to 4K	Up to 4K
Synchronous Playback	4-ch 4K/16-ch 1080P/720P/4CIF	4-ch 4K/16-ch 1080P/720P/4CIF	4-ch 4K/16-ch 1080P/720P/4CIF	4-ch 4K/16-ch 1080P/720P/4CIF	4-ch 4K/16-ch 1080P/720P/4CIF	4-ch 4K/16-ch 1080P/720P/4CIF	4-ch 4K/16-ch 1080P/720P/4CIF	5-ch 4K/16-ch 1080P/720P/4CIF
SATA(MAX)	8TB	8TB	8TB	8TB	8TB	8TB	8TB	8TB
eSATA	N/A	N/A	Y, Only for Backup	Y, Only for Backup	Y, Only for Backup	Y, Only for Backup	Y, Only for Backup	Y, Only for Backup
HDD(MAX)	2HDD	4HDD	4HDD	8HDD	8HDD	16HDD	24HDD	24HDD
RAID	N/A	N/A	N/A	Support JBOD, RAID1/5/10	Support JBOD, RAID0/1/5/10	Support JBOD, RAID0/1/5/10	Support JBOD, RAID0/1/5/6/10	Support JBOD, RAID0/1/5/6/10
POE	N/A	N/A	N/A	N/A	N/A	N/A	N/A	N/A
Alarm I/O	16/4	16/4	16/4	16/4	16/4	16/4	8/4	44/22
Corridor Mode	Y, 16:9 to 9:16, Only for Tiandy Cameras	Y, 16:9 to 9:16, Only for Tiandy Cameras	Y, 16:9 to 9:16, Only for Tiandy Cameras	Y, 16:9 to 9:16, Only for Tiandy Cameras	Y, 16:9 to 9:16, Only for Tiandy Cameras	Y, 16:9 to 9:16, Only for Tiandy Cameras	Y, 16:9 to 9:16, Only for Tiandy Cameras	Y, 16:9 to 9:16, Only for Tiandy Cameras
VCA	Support Tiandy Camera VCA	Support Tiandy Camera VCA	Support Tiandy Camera VCA	Support Tiandy Camera VCA	Support Tiandy Camera VCA	Support Tiandy Camera VCA	Support Tiandy Camera VCA	Support Tiandy Camera VCA
Power Supply	DC12V/5A, ≤35W (without HDD)	DC12V/5A, ≤35W (without HDD)	DC12V/5A, ≤40W (without HDD)	DC12V/5A, ≤40W (without HDD)	100~240V AC, 6.3A 50~60Hz≤80W (without HDD)	100 ~ 240V AC, 6.3A, 50 ~ 60Hz ≤80W (without HDD)	100 ~ 240V AC, 6.3A, 50 ~ 60Hz ≤80W (without HDD)	100 ~ 240V AC, 6.3A, 50 ~ 60Hz ≤80W (without HDD)
Working Temperature	-10 °C ~ +55 °C (+14 °F ~ + 131 °F), 10 % ~ 90 %RHG	-10 °C ~ +55 °C (+14 °F ~ + 131 °F), 10 % ~ 90 %RHG	-10°C~+55°C(+14°F~+131°F)	-10°C~+55°C(+14°F~+131°F)	-10 °C ~ +55 °C (+14 °F ~ + 131 °F)	-10 °C ~ +55 °C (+14 °F ~ + 131 °F)	-10 °C ~ +55 °C (+14 °F ~ + 131 °F)	-10 °C ~ +55 °C (+14 °F ~ + 131 °F)
Chassis	1U	1.5U	1.5U	2U	2U	3U	4U	4U